

HGP Open Part Number	Schematic Drawing #	Approx Weight (LBS)
HGP0003CW0S0000	31663	31
HGP0003CW0C0000	31663-1	35
HGP0003CW0S1000	31663-PQ1	33
HGP0003 CW0C1000	31663-PQ	38

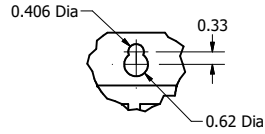
HGP Part Number	HorsePower (HP)	kVar	Harmonic	Voltage (V)	Hz.	Phase
HGP0003CW----	3	1	5th	600	60	3

HGP Eclosed Type 1 Part Number	Schematic Drawing #	Approx Weight (LBS)
HGP0003CW1S0000	31663	56
HGP0003CW1C0000	31663-1	60
HGP0003CW1S1000	31663-PQ1	58
HGP0003CW1C1000	31663-PQ	63

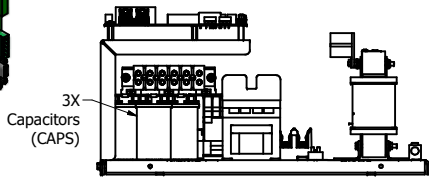
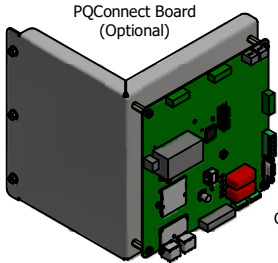
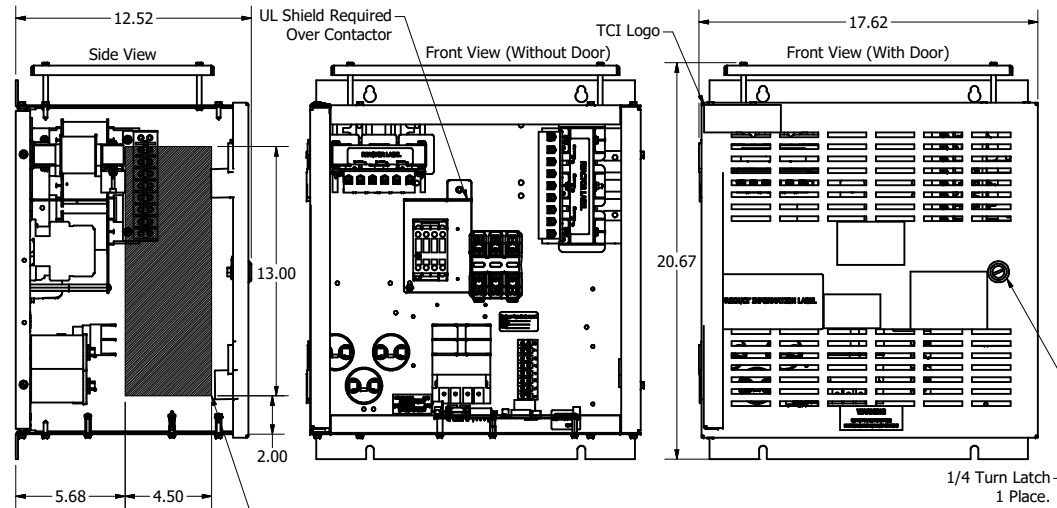
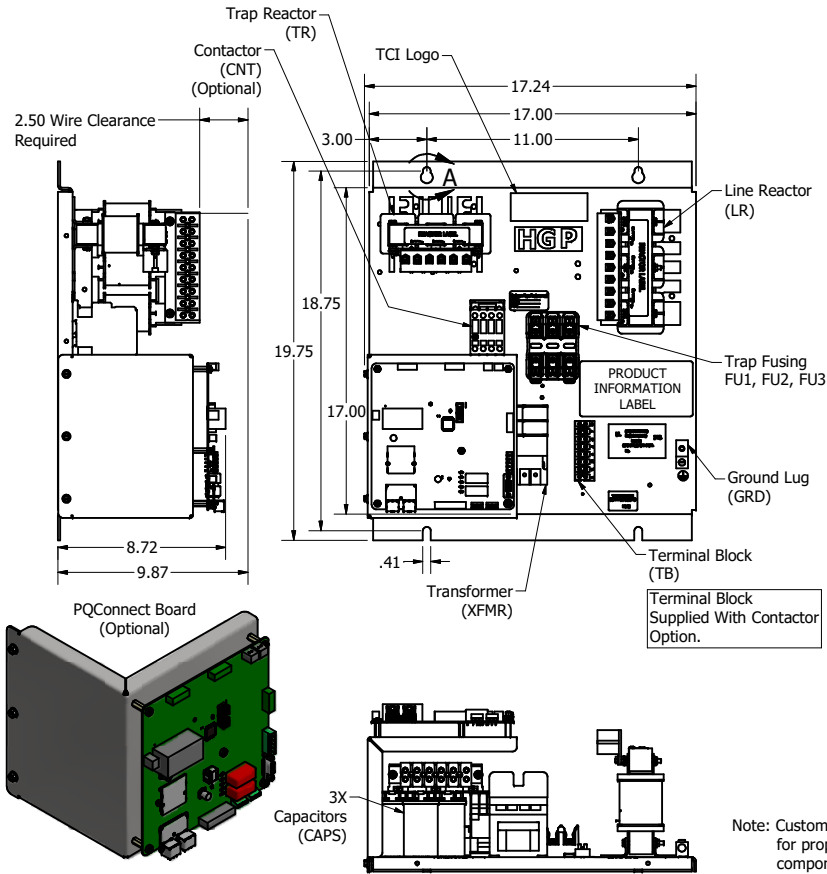
Note: For Torque Information
See IOM Manual

Customer Connections.
L1, T1, L2, T2, L3, T3
Wire Range: 1 AWG to 22 AWG.

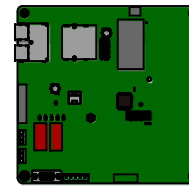
Ground Lug
Wire Range: 1/0 to 14 AWG.



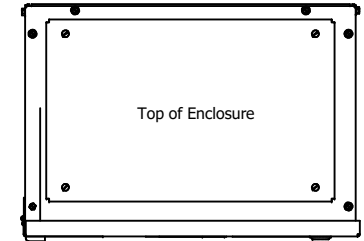
DETAIL A
Keyslot



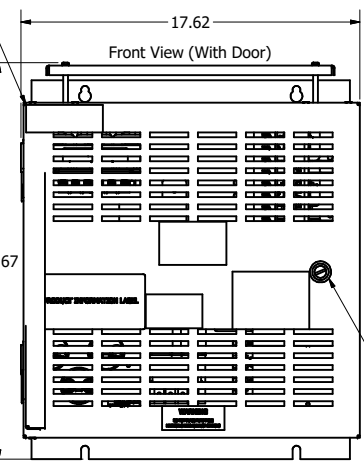
Note: Customer is responsible
for proper cooling of filter
components on open panels.
Capacitors Maximum Ambient 50°C.



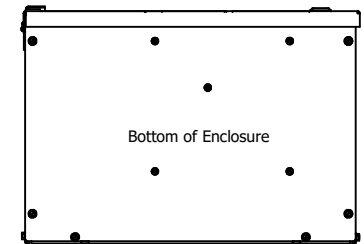
PQConnect Board
Mounted on Bottom
OF Enclosure.
(Optional)



Top of Enclosure



1/4 Turn Latch
1 Place.



Bottom of Enclosure

HGP0003CW----				
Components	0S0000/1S0000	0C0000/1C0000	0S1000/1S1000	0C1000/1C1000
Line Reactor (LR)	X	X	X	X
Trap Reactor (TR)	X	X	X	X
Capacitor (Cap)	X	X	X	X
Trap Fusing, FU1, FU2, FU3	X	X	X	X
Contactor (CNT)		X		X
Transformer (XFMR)		X	X	X
XFMR Fusing, FU4, FU5		X	X	X
PQConnect Board			X	X

TCI, LLC CLAIMS PROPRIETARY RIGHTS IN THE MATERIAL HEREIN DISCLOSED. IT IS SUPPLIED WITHOUT PREJUDICE TO ANY PATENT RIGHTS OF TCI AND MAY NOT BE REPRODUCED OR USED TO MANUFACTURE ANYTHING SHOWN THEREIN WITHOUT WRITTEN PERMISSION FROM TCI.

REV	DATE	BY	DESCRIPTION
A	06/13/19	JHM	AS DESIGNED
NO			REVISION

TOLERANCES (EXCEPT AS NOTED)			
DECIMAL	.XX ± .25	.XXX ± .10	
FRACTIONAL	± 1/16		
ANGULAR	± 1°		

Material(s) Shall be RoHS Compliant

TCI W132 N10611 Grant Drive
Germantown, WI 53022

HarmonicGaurd Passive
HGP, 3HP, 600/3/60, Open and Type 1

DRN BY	JHM	DATE	06/13/19	108179DG
SCALE	1/5	DRWN	JHM	REV

SHT 1 OF 1